



FEEL GOOD

with Leitz Ergo

HEALTHY WORKPLACE
WORK ACTIVELY: SIT, STAND & MOVE



LEITZ®

The IGR Institute for Health and Ergonomics are in full support of Leitz and have thoroughly examined many of their products to award the IGR quality seal. The main criteria for an "ergonomic product" is usability and adaptation to the requirements of different users, taking into account DIN 26800 EN ISO 15537. We know that no one person is the same, but everyone still deserves equally excellent working conditions!

The Leitz vision is to be the brand that helps people feel good at work and beyond wherever you are to make everyday life easier and more enjoyable. Leitz products are intuitively designed, premium quality and made to last, just as you'd expect from our long German heritage. Alles im Griff since 1871!

Leitz Ergo range of workplace ergonomic products for the office and home are the perfect tools to sit, stand and move to help stay healthy and productive throughout the day.

INTRODUCTION

Focussing on better working conditions to improve physical health and mental well-being has never been more important. And as no one person is the same, the ‘ideal’ workplace must be designed to adapt to individual needs.

Whether employees are working in the office, at home, travelling, or a combination of all three, creating an ergonomic workspace is essential for both personal and organisational success.

Leitz and the Institute for Health and Ergonomics are working together to provide products that can help businesses with the changing demands of healthy working environments. The focus is on adapting to these new ways of working and providing solutions that can use used by anyone, anywhere.

These award-winning products combine design and functionality and have been certified for their ergonomic quality. Creating the “ideal workplace” is a step closer.



Christian Brunner
CEO

Institute for Health and Ergonomics GmbH

Good ergonomics means first and foremost “reaching people” and only secondarily “meeting standards.”



Many Leitz Ergo products have received the prestigious German Design Award in 2022, 2024, 2025 and 2026, which recognises outstanding product design, adapting to the challenges of today and future thinking.



SIT - STAND - MOVE.

The first steps towards a healthy and productive working environment is to create a workspace that is comfortable and keeps us active. Sitting for prolonged periods of time can have a detrimental effect on health so a workstation must ensure posture is correct while providing the ideal mix of sitting, standing and moving.

Stylish, certified ergonomic tools are easy to use and support health, successful performance and employee satisfaction.

FEEL GOOD with LEITZ Ergo.

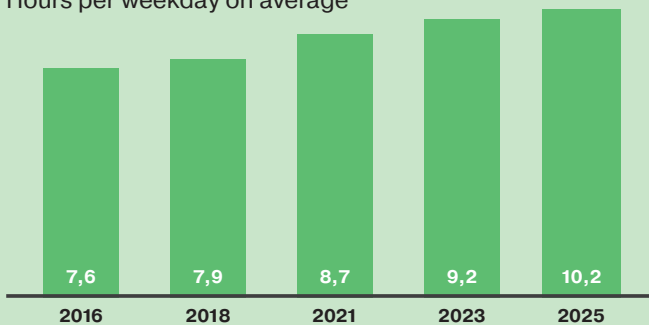


Create personalised, ergonomic workspaces that keep everyone moving to help overall health and improve mental well-being



Sitting times

Hours per weekday on average



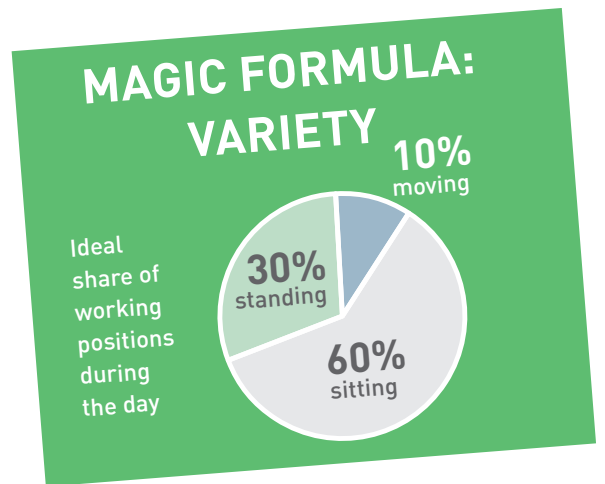
According to a recent report from health insurer DKV, sitting time continues to increase. In the last seven years, the average sitting time on workdays for every German has risen and is now an average of 10.2 hours a day.

Less than 4 in 10 of those surveyed achieve the combined exercise recommendations and muscle activity, and the physical and psychological well-being results are worrying. Studies show that sitting for long periods increases the risk of numerous diseases such as type 2 Diabetes and cardiovascular disease. In the short term, it can also cause chronic back pain, repetitive strain injuries and head and neck pain.

Source: DKV Report 2025

ACTIVE WORKSPACES to stay healthy and productive

Creating a flexible workspace that provides comfort while keeping you active will maximise productivity and efficiency during the working day.



ACTIVE SITTING



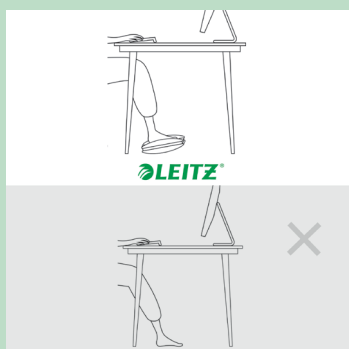
Leitz Active Sitting Balls are the ideal solution to get you moving and can be used in addition to an office chair. They are ideal for encouraging back and core muscle movement.

Exercise balls are also suitable for a wide range of workouts, including core exercises, strength training, flexibility routines and balance training.

SITTING IS UNAVOIDABLE:
The average office worker spends 80,000 hours sitting during their working life.

Add a Leitz Ergo Wobble Cushion to your existing chair to provide full back support and encourage movement while sitting for long periods.

Designed to be used on any chair, this inflatable seat cushion helps strengthen the back by creating micro-movement to maintain balance while seated.

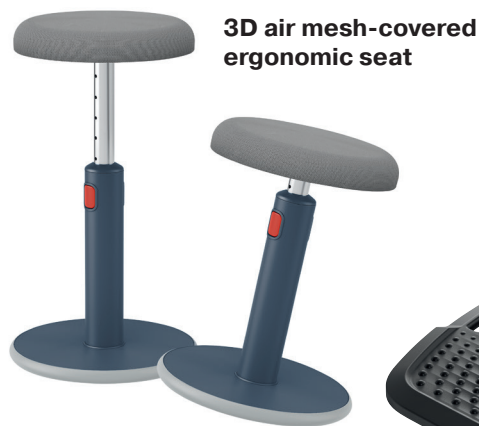


Keep your legs moving even while sitting with a Leitz Ergo Adjustable Foot Rest. With 2 height settings it will keep feet and legs at the ideal angle and can be used as an ankle rocker.

SIT-STAND

The Leitz Ergo Sit Stand Active Stool allows the flexibility to move between sitting and standing with just one stool, encouraging muscle movement, improving posture and increasing energy levels.

It also features a rounded base to encourage active movement by swivelling and rocking while you work to strengthen your back.



3D air mesh-covered ergonomic seat

Non-slip wobble base



Use a Leitz Ergo Anti-Fatigue Mat while standing to correct posture, improve circulation and provide strong sole support to reduce fatigue and leg and foot pain.

The raised edges and different shaped massage zones on the Leitz Ergo Active Anti-Fatigue Mat will keep you moving throughout the day – ideal for working and video conferencing at a standing desk.

Instantly transform any table or desk into a sit-stand workstation with a space saving Leitz Ergo Standing Desk Converter. Keep moving and burn extra calories while working.

Quick and easy to set-up, the pneumatic assisted adjustment will effortlessly lift the stand to the perfect height, moving straight up and down within its own footprint to save space.

Use a Leitz Multi-Angle Laptop Stand to raise your laptop screen to a perfect height when sitting or standing.



ACTIVE WORKSPACES for every office

Imagine an office that not only looks great but is also ergonomic and efficient.

An office where every desk can be personalised to help employees perform at their best, work comfortably to reduce aches and pains, and stay active throughout the working day.



Improve well-being: improve the office experience

Getting people to re-engage with working in a traditional office is one of the greatest challenges facing companies. With shared desks and hot-desking still very commonplace, ensuring everyone can work comfortably and efficiently on their chosen office days is essential. Making sure your hybrid workers have access to a flexible workstation that can be easily personalised will create a positive and healthy environment where employees will choose to be.





FITS YOU - FITS ANYWHERE

Leitz Ergo Compact Workstations will maximise the space available and provide everything needed for a comfortable, organised and active workspace.

A flexible solution where the entire workstation can be fully personalised by selecting products based on your own needs to build the perfect workspace.

And more importantly, reduce aches and pains.



1. Leitz Ergo Compact Workstation Pro - Dual Monitor

2. Leitz Ergo Compact Workstation Pro - Monitor and Laptop



3. Leitz Ergo Compact Workstation Pro - Laptop

4. Leitz Ergo Compact Workstation Pro - Work Anywhere

5. Leitz Ergo Compact Workstation Pro - Small spaces



ESSENTIAL EQUIPMENT

for a personalised ergonomic and active workspace

Select the product combination that works best for the space available, hardware being used and encourages movement.

1. CHOOSE A DESK

Maximise the available space with a workstation of your choosing to ensure productivity, comfort and organisation.

2. POSITION SCREENS

Improve posture and reduce aches and pains by using laptop and monitor stands and arms to ensure screens are at the correct height.

3. SELECT SEATING

Stay active and boost energy by replacing the office chair with a sitting or standing stool or sitting ball to keep moving.

4. FEEL GOOD ACCESSORIES

Add comfort, reduce clutter and co-ordinate the workstation with matching wrist rests, foot rests, desk organisers and seat cushions.



	Maximises Space	Improves Posture	Reduces Aches & Pains	Boosts Energy	Stay Active	Reduces Clutter	Ultimate Comfort
Sit-Stand Desk/Desk Converter	✓	✓	✓	✓	✓	✓	✓
Active Stool	✓	✓	✓	✓	✓		✓
Active Stool with Wheels	✓	✓	✓	✓	✓		✓
Laptop Stand	✓	✓	✓			✓	✓
Monitor Arm/ Monitor Stand	✓	✓	✓			✓	✓
Desk Organiser	✓	✓	✓			✓	
Foot Rest/ Anti-Fatigue Mat		✓	✓	✓	✓		✓
Balance Board		✓	✓	✓	✓		✓
Wrist Rest/ Mouse Mat			✓				✓
Sitting Ball		✓	✓	✓	✓		✓
Seat Cushion	✓	✓	✓				✓

Maximises Space



DESKS

Leitz Ergo Sit-Stand Desks are available in various sizes and features - ideal for temporary workspaces and flexible working.

Stay Active



STOOLS

Move between sitting and standing while you work or use a stool on wheels to encourage muscle movement, improve posture and increase energy levels.

Reduce Clutter



ORGANISERS

Pegboard Desk Organisers keep all your essentials organised, easy to find and free up valuable desk space.



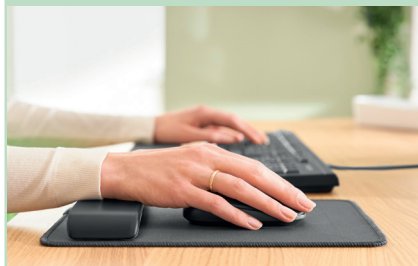
Improves Posture



LAPTOP STANDS & MONITOR ARMS

Raise screens to the perfect height to support neck and shoulder comfort.

Ultimate Comfort



WRIST REST & MOUSE MAT

Improve wrist alignment and reduce the risk of repetitive strain injuries.

Boosts Energy



BALANCE BOARD

Low-impact rocking motion keeps legs and core muscles moving to help improve posture, strengthen core muscles, enhance balance and reduce back pain.

KEEP MOVING ✓



Moving between sitting and standing while you work makes for a much healthier lifestyle. It increases circulation, improves blood flow and helps you burn extra calories while you work.

Selecting the right equipment will ensure effortless transitions between sitting and standing.

The new professional Leitz Ergo Electric Sit Standing Desks offer a spacious, ergonomic workspace designed to enhance comfort and productivity.

With smooth electric height adjustment, a programmable stand-up reminder, four memory presets, and quiet motor operation, it encourages healthy posture changes throughout the day. Pair it with other Leitz Ergo accessories to create a flexible, wellbeing-focused workstation.

Whether placed in a home office, creative studio, or collaborative workspace, the Leitz Table becomes the foundation of your daily routine — helping you stay focused, inspired, and aligned with your values.

SHAPE YOUR ENVIRONMENT to stay focused

It also includes anti-collision protection, a digital height display, USB-C and USB-A ports for convenient device charging, and a child-lock function, promoting safety with modern functionality for an efficient work experience.

Crafted from FSC-certified wood and designed for minimal energy consumption in standby mode, this product combines sustainability with style. Its fully recyclable packaging and five transparent cable holders let you stay organized while making a choice you can truly feel good about.





Leitz Ergo Sit-Stand Workstations are ideal for flexible use and as a temporary desk where space is limited. It is quick and easy to adjust the height of the desk allowing you to switch between sitting or standing while you work.

Pair with the innovative pegboard organiser, monitor arm or add a Leitz Aluminium Ultra Slim Adjustable Laptop Stand to your desk to raise your laptop screen to the perfect height. With its SlimLift Design (SLD) and protective cotton storage pouch, this laptop riser fits neatly in a bag to be used on the move or safely stored in a drawer.



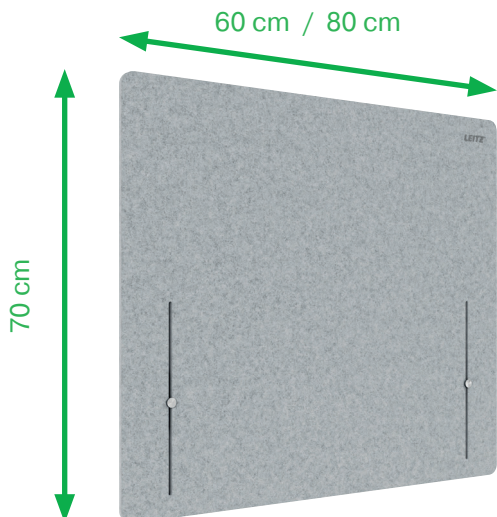
STAY FOCUSED AND PRODUCTIVE

Create a calm workspace to reduce visual distractions and dampen noise with Leitz Ergo Desk Dividers.. Easy to raise the desk top screen for a private, focused workspace and lower again to collaborate with colleagues.



Available in two sizes and easy to install, they integrate effortlessly into any desk setup. Combine several panels to design your own modular workspace — helping you stay comfortable, focused, and productive throughout the day.

Durable and lightweight 12mm desk divider panel made from thermally bonded non-woven fabric containing 75% recycled post-consumer plastic (PET)



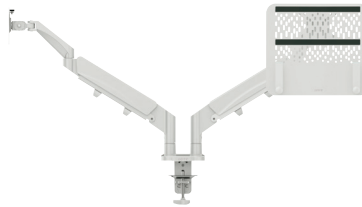
FLEXIBLE WORKSPACES for every office

In a world where we can work flexibly from multiple locations, it is inevitable that workspaces will need to be shared.

Providing products that are compact, can be easily adjusted and moved around allows every employee to create their own workstation on any desk.



SIT-STAND DESK



SPACE-SAVING MONITOR ARM



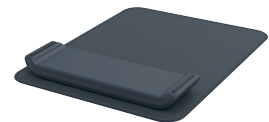
FOLDABLE LAPTOP STAND



ERGONOMIC CHAIR



DESK ORGANISER



ADJUSTABLE MOUSE MAT WITH WRIST REST

DO'S ✓

- Height adjustable desk
- Raise monitors and laptops
- Sit-stand stools
- Seat cushions
- Wrist and foot rests
- Desk organisation

DON'TS ✗

- Fixed chair
- Fixed desk height
- Fixed monitor height

When employees are sharing office chairs, it is important to ensure clear instructions are available for making adjustments and ensuring the best seating position. Each chair should be clearly identified with a visible sticker naming the brand and model number. The user can then easily find operating instructions on the internet or in a user manual.





THE DYNAMIC OFFICE
Leitz Ergo products are designed to move with you, from desk to desk or to a meeting room. Set up instant spaces to share ideas and collaborate with colleagues.

IGR STUDY

“Well-Being in the Hybrid World of Work”: Study Confirms the Positive Impact of Leitz Active Working Solutions

The study “Well-Being in the Hybrid World Environment”, conducted by the Institute for Health and Ergonomics (IGR), shows that Leitz Ergo products have a proven positive effect on physical well-being and performance.

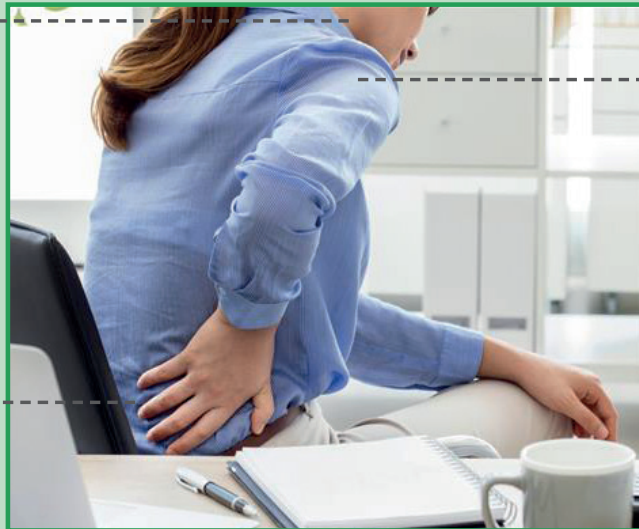
For the study, 41 employees aged between 18 and 61 from public-sector, private-sector, and social organizations were observed. The participants worked in hybrid working structures and tested various ergonomic product packages from Leitz over a period of four to six weeks – both in the office and in the home office.

After the testing phase, **81 percent of participants reported an improvement in their physical well-being and performance**. Relief was most frequently reported in the neck (60 %), back (53 %), and shoulders (40 %) – areas that are particularly strained during everyday work.

IMPROVEMENT OF PHYSICAL WELLBEING

81% of participants reported an improvement in their physical well-being and performance

NECK
60 %



SHOULDERS
40 %

BACK
53 %

THE TESTERS' TOP PRODUCT CHOICES

As part of the study, several ergonomic product selection packages were made available. These Leitz products were rated as the top choices by the testers.



Work behavior also changed noticeably: Almost two thirds of respondents stated that they had **positively adapted their usage behavior**, for example by switching more frequently between sitting and standing or incorporating more movement into their working day. The ergonomic solutions therefore not only provided support but also encouraged new and **healthier active working routines**.



High acceptance and positive user experience: In addition to the physical benefits, the products also impressed in everyday use. Nearly 80 percent of participants rated the ease of use and comfort of the tested Leitz products positively. Particular praise was given to the workstation concept as well as space-saving and flexible solutions that can be easily integrated into different workplace situations – a decisive factor in hybrid working models.

Holistic active working solutions for hybrid working: The study results underline Leitz's holistic approach to ergonomics. The focus is not on individual products, but on well-designed workstation concepts that combine movement, structure, and user-friendliness. The solutions can be flexibly combined and individually adapted to different workplaces, room sizes, and personal needs – from permanent office workstations to temporary home-office setups.

As highlighted in our Leitz whitepaper, these findings reinforce the growing responsibility companies have to proactively support the health and well-being of their employees.



HEALTHY WORKSPACES

= Less sick days

DID YOU KNOW
that one sick day can cost
between 500-1000 €

Inferior workplace equipment and desks that have not been set up correctly or ergonomically can result in higher levels of absenteeism and long-term sickness. Ensuring your office has the correct equipment will help prevent injuries and chronic illness caused by incorrect seating positions, reduced activity and repetitive movements.

There are also legal regulations in place to protect the health and safety of employees at work that must be considered.



CORRECTING BAD POSTURE

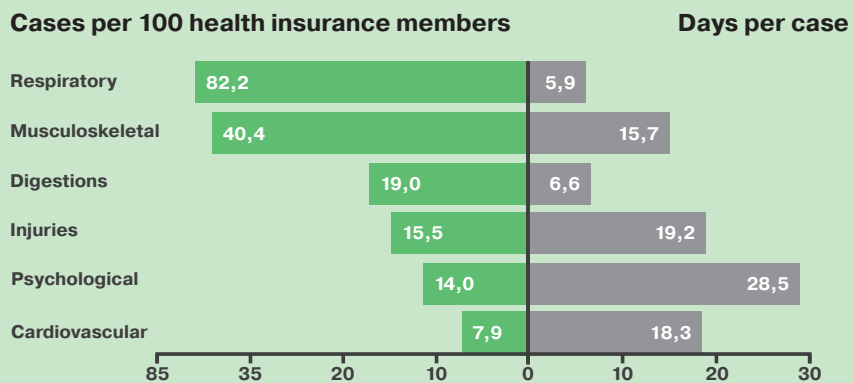
Most of the working day can be spent seated, which causes aches and pains in the back, neck, legs and feet. However, by ensuring the chair and desk are set up correctly and using ergonomic equipment such as laptop stands and seat cushions, this risk can be significantly reduced.

Perfect seating position

- Knees and elbows are angled at 90 degrees
- Feet are flat on the floor or on a footrest
- Back has full contact with the backrest

Main reasons for absenteeism

Absenteeism due to musculoskeletal disorders is increasing. In 2025, there were 40,4 cases per 100 health insurance members, up from 37.4 in 2022 and 34.5 in 2021. On average, individuals took 15,7 sick days for musculoskeletal issues. Improving workplace ergonomics can help mitigate this trend.



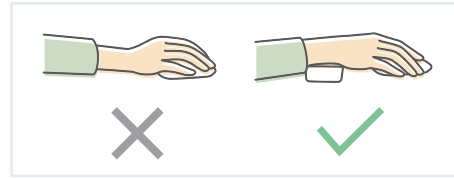
Absenteeism Report 2025

Source: Wissenschaftliches Institut der AOK (WiDO)

AVOID REPETITIVE STRAIN INJURY ✓

Wrist rests and mouse mats are designed to provide maximum comfort while sitting or standing and ensure proper wrist alignment to reduce the risk of repetitive strain injuries.

The Leitz Ergo Adjustable Wrist Rest and Mouse Mat with Adjustable Wrist Rest have 2 height settings and foam cushioned padding for a comfortable and active working set-up.

**STRAINED NATIONAL ECONOMY**

In 2024, the average work absence rates were 20,8 days per employee, which resulted in a total of 881,5 million days off work. Based on this volume of incapacity to work, the BAuA estimates economic losses of 134 billion euros or a gross value loss totalling 227 billion euros.



IN EU LAW, 'THE FRAMEWORK DIRECTIVE (89/391/EEC)' IMPOSES A DUTY OF CARE ON EMPLOYERS, OBLIGATING THEM TO TAKE NECESSARY MEASURES TO ENSURE EMPLOYEE SAFETY, WHICH INCLUDES ERGONOMIC CONSIDERATIONS.

LEGAL REGULATIONS @ WORK ✓

The provisions of Directive 89/391/EEC is a European Union directive for all EU members with the objective of introducing measures that encourage improvements in the health and safety of employees at work. It is described as a "Framework Directive" for occupational safety and health (OSH) by the European Agency for Safety and Health at Work. The implementation is country-specific and translated into concrete instructions for action in the national occupational health and safety regulations. To err on the side of caution, it is important to comply with the minimum requirement of these regulations.

FEEL GOOD

Top 10 tips to improve well-being

Every company strives to provide a healthy and positive workplace to ensure employees make the most of their working day.

These simple tips can be shared with the office and will make a big difference to both physical and mental well-being. Keep everyone motivated, productive and, most importantly, feeling good.

TOP 10 TIPS

1. Create your workspace: Select your workstation and adjust your desk, seat and laptop or monitor stand to a comfortable height.
2. Ergonomic products are essential: They help promote comfort, productivity and overall well-being.
3. Take regular breaks: Schedule short breaks throughout the day to stretch your muscles and clear your mind.
4. Stay active: Take short walks and do stretching exercises during breaks.
5. Eat nutritious meals: Plan and prepare healthy meals and snacks in advance.





6. Stay hydrated: Keep a water bottle nearby and drink plenty of water throughout the day.
7. Prioritise sleep: Aim for 7-9 hours of quality sleep each night. Establish a relaxing bedtime routine, limit screen time before bed and create a comfortable sleep environment.
8. Manage stress: Practise stress-reduction techniques such as deep breathing, meditation, yoga or journaling.
9. Stay connected: Maintain regular break-out sessions and meetings with colleagues
10. Set boundaries: Clearly communicate your availability and workload to your colleagues to prevent stress and burnout.



FOR BODY AND SOUL:
take time for yourself
and do what makes you
feel good. Meditation and
relaxation exercises help
to reduce stress.

ORGANISED WORKSPACES

Clear desks. Clear minds. Better performance.

In today's hybrid working world, desks are no longer personal and permanent – they are shared, flexible, and constantly changing. Well-designed desk organisation solutions help employees transition smoothly between workstations, reduce friction at the start and end of the workday, and create a sense of control in dynamic environments.

A clean, organised desk doesn't just look better – it supports mental wellbeing, focus, and productivity, wherever work happens.



Research shows that clutter has a negative impact on our brains, reducing our ability to concentrate, impairing cognitive function and increasing stress levels.¹ A lack of physical organisation can be a nagging reminder of unfinished tasks.

Conversely, research in occupational health demonstrates that the more control that you perceive you have in your work, the more job satisfaction and less stress you experience.²

1. Interactions of top-down and bottom-up mechanisms in human visual cortex. *Journal of Neuroscience*, 2011

2. The Psychological Consequences of Clutter. *Psychology Today*, 2021

Stay organised. Wherever you work.

From desk to meeting room, from office to home office – organised storage solutions ensure that employees can focus on their work instead of searching for tools or resetting their workspace.



Designed for Desk Sharing & Hybrid Work

Hot desking bags for mobility and clean desk policies

Hot desking bags make it easy to move between workstations, offices, or home and office setups. Employees can carry everything they need in one compact, organised solution, enabling faster setup, smoother transitions, and consistent organisation wherever they work.

At the end of the day, desks can be cleared in seconds – supporting clean desk standards, data protection, and shared space efficiency.

Organisation is a foundation for wellbeing, productivity, and professional working environments. Structured workspaces save time, reduce stress, and support efficient collaboration – especially in hybrid and shared office concepts.



Smart desk organisers for flexible workstations

Leitz desk organisers provide dedicated space for everyday work essentials, helping employees quickly set up and clear their workspace. Pens, notebooks, tech accessories and personal items are always within reach – without cluttering the desk.

Modular, space-efficient designs support clean desk policies while maintaining comfort and usability throughout the workday.

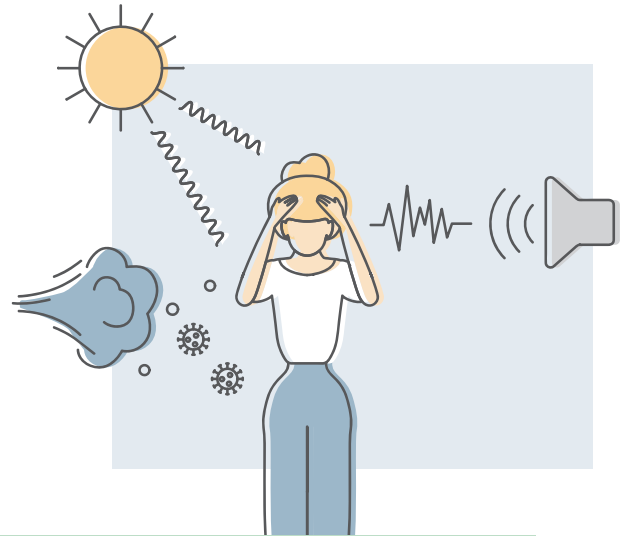


HEALTHY OFFICE ENVIRONMENT

Lights, climate, acoustics

Acoustics

Studies have shown that unwanted sound or 'noise' is a common complaint amongst workers, and this is often not considered in the design of an office. With open plan spaces on the increase, there are some simple measures that can be taken to reduce the impact of noise and improve employee well-being.



- ✓ Sound absorbing plants and accessories
- ✓ Dedicated 'quiet' areas
- ✓ Careful arrangement of teams to match daily activity
- ✓ Separate rooms for noisy machines e.g. shredders, copiers
- ✓ Designated lunch areas
- ✓ Playing ambient noise
- ✓ Use partitions



The influence of acoustics, light and climate on our work environment is particularly important as we experience longer working hours and higher, more intense workloads.

Light

Working in an office that has poor lighting can have a negative effect on health, productivity and morale. Correct lighting is not only important for preventing eye strain and migraines but can also be used to elevate the office experience, promoting well-being and enhancing overall business performance.

The right mix of natural and artificial light will help improve focus, concentration and engagement. Using different colours can have a positive effect on mood and creates zones within the office for reflection, creativity or simply having some fun. The light intensity and warmth should also be adjusted depending on the area, time of day or the job at hand.

Effects of changing lighting colour in the office

- Relaxed
- Calm
- Productive
- Happy



Climate

The office climate has a strong influence on the health and wellbeing of employees. A pleasant and comfortable working environment can be achieved when the air temperature, air flow and humidity in the room are at optimal levels. The perception of comfort can vary from person to person and is mainly dependent on the level of activity, clothing, length of stay, seasonal fluctuations and personal preference.

There are many ways to ensure a healthy climate in the office. Monitoring humidity, using natural ventilation or air purification all help regulate and maintain a consistent indoor climate. Consideration of the office layout to allow proper air flow and avoiding blocking windows or vents will also be very beneficial.

HEALTHY HOME OFFICE

Supporting hybrid and remote workers

Almost five years have passed since the first “work from home” mandate was introduced – and many people’s working lives have never been the same since. Some employees have never returned to a physical office, while others are still adjusting to hybrid working. Providing support for hybrid and remote workers is just as important as office-based workers, with many of the same challenges

IN THE COURSE OF A YEAR, 60% OF WORKERS WERE REPORTED TO SUFFER FROM SOME MUSCULOSKELETAL DISORDERS.



41%
Suffered pain in neck, shoulders, and upper limbs

43%
Suffered back pain

The physical well-being of those working from home is suffering and there has been a significant rise in back pain, neck pain and other musculoskeletal disorders. Providing information and guidance on best practices for setting up a home office will allow everyone to stay healthy and active in the office and at home.

Sit or Stand



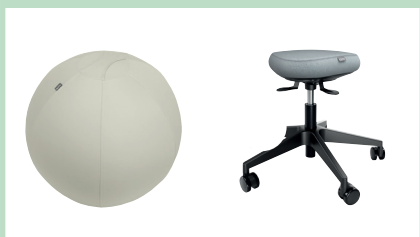
Organise



Create a dedicated, ergonomic workspace at home



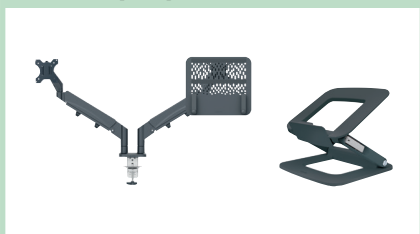
Sit



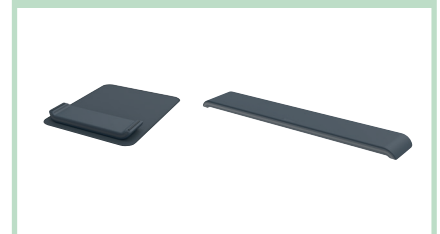
Stand



Laptop or Monitor



Added comfort



LEGAL REGULATIONS @ HOME ✓

As with office workers, the occupational safety and health (OSH) "Framework Directive" from the European Agency for Safety and Health at Work applies to those working from home. Businesses have a responsibility to improve the health and safety of all employees and should consider providing ergonomic equipment and guidelines on setting up a home office.



LEITZ ERGO PRODUCT OVERVIEW



7) **NEW**

Electric Sit Standing Desk
140x80cm
■ **67730001** EU plug
■ **67731001** UK plug



7) **NEW**

Compact Electric Sit Standing Desk
120x70cm
■ **67700001** EU plug
■ **67701001** UK plug



1), 7), 9)
Small Electric Sit Standing Desk
80x60cm
■ **65340001**



1), 7), 9)
Small Sit Standing Desk
80x60cm
■ **65360001**



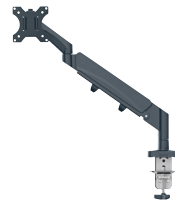
0), 7), 9) **NEW**
Small Foldable Sit Standing Desk
65x46cm
■ **65880001**



1)
Pegboard Organiser with laptop holder
■ **65490000**



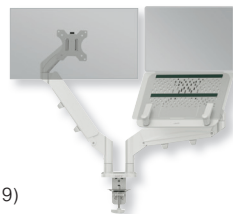
1)
Small Pegboard Organiser
■ **65480000**



2), 7), 9)
Space Saving Single Monitor Arm
■ **64890085** New colour
■ **64890089**



2), 7), 9)
Space Saving Dual Monitor Arm
■ **65370085** New colour
■ **65370089**



2), 9)
Space Saving Dual Monitor & Laptop Arm
■ **65380085** New colour
■ **65380089**



1), 7)
Ultra Flat Adjustable Laptop Stand
■ **63460089**



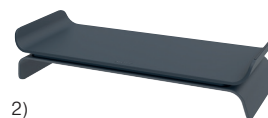
2), 7)
Multi-Angle Laptop Stand
□ **64240001**
■ **64240089**



4), 7)
Laptop Stand
■ **64260019**
■ **64260061**
■ **64260089**



4), 7), 9)
Standing desk converter
■ **65320085** with tray
■ **65330085** without tray



2)
Adjustable Monitor Stand
■ **65040085**
■ **65040089**



Monitor Stand
□ **64340001**

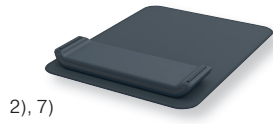


LEITZ ERGO PRODUCT OVERVIEW



Adjustable Mouse
Wrist Rest
■ 64830085 4), 7)

Adjustable Keyboard
Wrist Rest
■ 65240085 4), 7)
■ 65230089 2), 7)



Mouse Pad with Adjustable
Wrist Rest
■ 65170085
■ 65170089



Sitting Ball
■ 52790019
■ 52790061
■ 52790089



Active Sitting Ball with stopping function
Small, 55 cm Medium, 65 cm Large, 75 cm
■ 65410085 ■ 65420085 ■ 65430085
■ 65410089 ■ 65420089 ■ 65430089



With wobble seat
■ 65770095



Sitting Stool with Wheels
■ 65780095



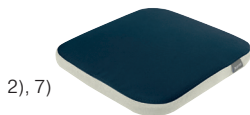
Sitting Stool
■ 65440085
■ 65440089



Standing Stool
■ 65450085
■ 65450089



Active Sit Stand Stool
■ 65180019
■ 65180061
■ 65180089



Active Wobble Cushion
■ 65390089
with fabric cover
■ 65400085
■ 65400089



Seat Cushion
■ 52840019
■ 52840061
■ 52840089



Balance Board
■ 65870089



Active Anti Fatigue Mat
■ 53730089



Anti Fatigue Mat
■ 53690089



Adjustable Computer
Foot Rest
■ 65030085

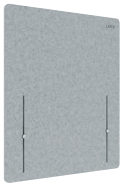


Foot Rest
■ 53710019
■ 53710061
■ 53710089



Adjustable Foot Rest
■ 65460089





Leitz Height Adjustable Desk Divider, 60x70cm
61220085



Leitz Height Adjustable Desk Divider, 80x70cm
61230085

ACCESSORIES



Cosy Wireless Computer Mouse
65310019
65310061
65310089



Cosy Insulated Water Bottle
90160019
90160061
90160089

STORAGE & ORGANISATION

NEW



Puro Storage with lid, small, 7L, 100% recycled card, pack of 2
61470095
61470068
61470050
61470012

NEW



Puro Storage with lid, medium low, 8L, 100% recycled card, pack of 2
61480095
61480068
61480050
61480012

NEW



Puro Storage with lid, medium, 17L, 100% recycled card, pack of 2
61490095
61490068
61490050
61490012

NEW



Puro Magazine File, 100% recycled card, pack of 2
24710095
24710068
24710050
24710012

3)



Pack of 2
61460089 Small
61440089 Medium
61450089 Large

3)



Small Hot Desking Work Bag
65760089
 Large Hot Desking Work Bag
64440089

3)



Fabric Hot Desking Work Bag with Lid
67230089
 Large Hot Desking Work Bag
67240089

NEW



Fabric Portable Desk Organiser with Handle
61970089



NEW

Hanging Portable Desk Organizer with handle

61990089



NEW

Portable Desk Organizer with Handle

61980089



MyBox Large with lid

52161001



MyBox Small with lid

52291001

5263 00 - color swatches



MyBox Organiser Tray with handle

Small 53230001

Large 53220001

5) Small 5266 00 - color swatches



MyBox Organiser Tray Long

52581001

5) 5265 00 - color swatches

5)



MyBox Storage Tray

52571001

5264 00 - color swatches

6)



MyBox Small Storage Box with Organiser Tray-Set

5267 00 - color swatches

6)



Click & Store Magazine File

5356 00 - color swatches

6)



Click & Store Drawer Cabinet

5368 00 - color swatches

6)



Drawer Cabinet

5357 00 - color swatches

6)



Storage Carry Box

6125 00 - color swatches

6)



Click & Store Storage Boxes

Cube 5347 00 - color swatches

Medium 5348 00 - color swatches

Large 5349 00 - color swatches

3)



5)

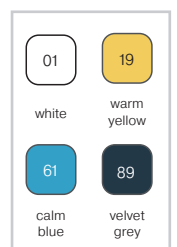


reddot winner 2021

6)



reddot winner 2022



#WorkLeitzBalance



The art of balancing all aspects of a multifaceted work life without compromising on design, quality, reliability or sustainability. A state achieved with the help of world class German engineered products. Alles im Griff since 1871.



Find out more about our products
www.leitz.com/ergo



LEITZ[®]